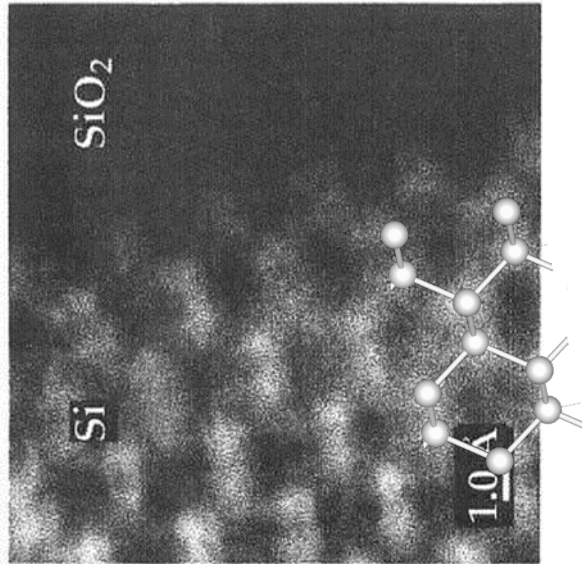


SiO₂/Si界面観察

HR-TEMとHAADF-STEM

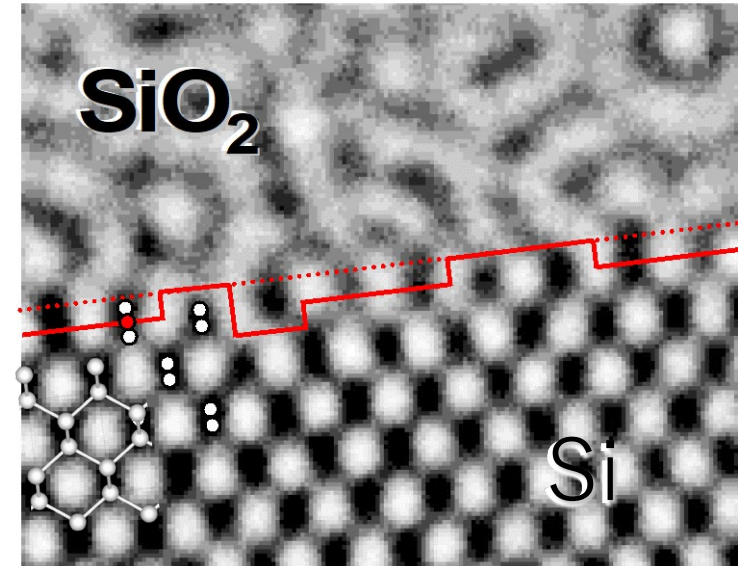
SiO₂/Si界面はどこまで見えるだろう？

HAADF-STEM



…, the atomic structure of the interface still **cannot be determined** directly from experimental data, …

HR-TEM



Direct observations of the atomic structure at a SiO₂/Si interface **have revealed** that an epitaxial cristobalite-like SiO₂ layer is formed …